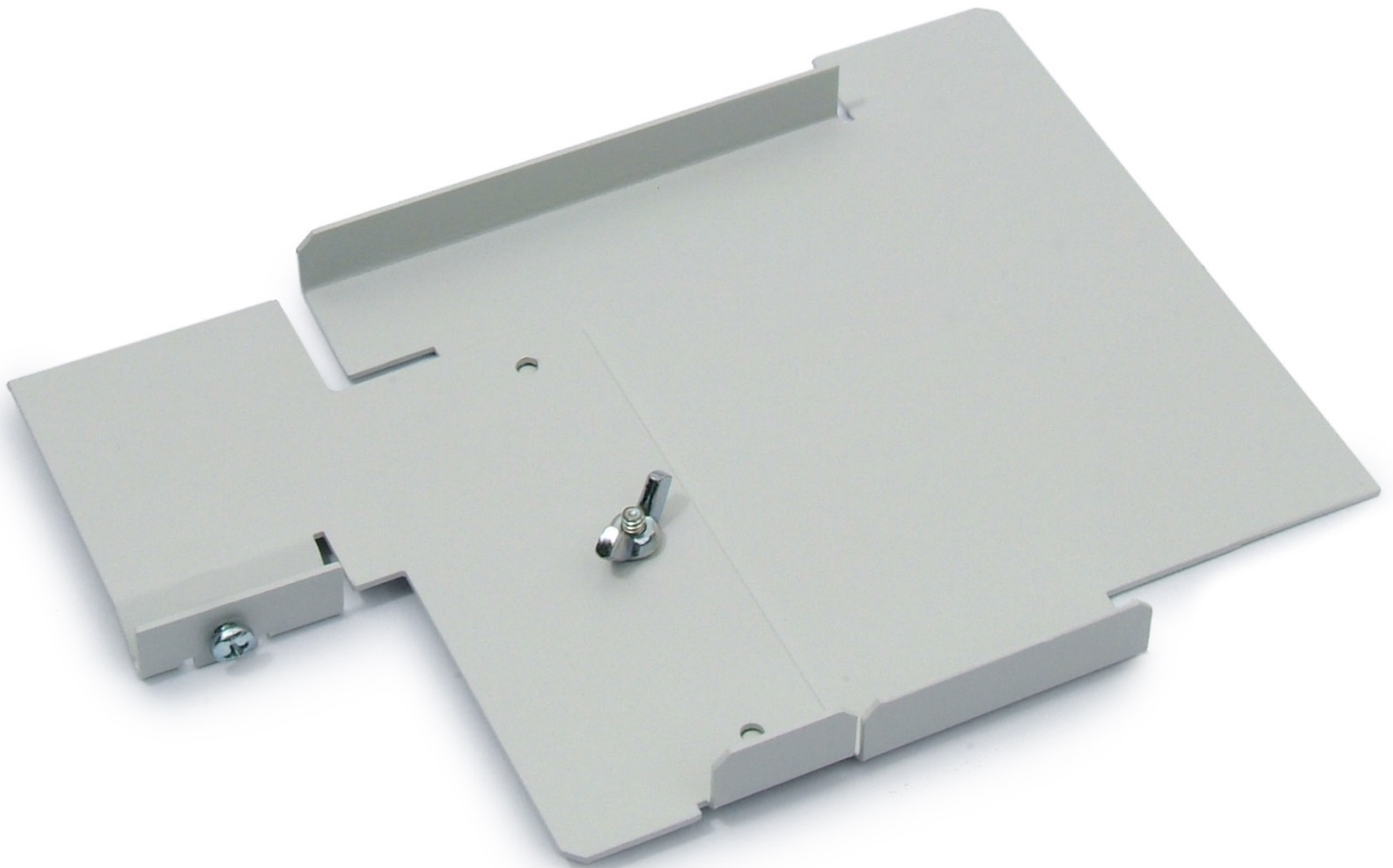


Overview

Relay Voltage Divider (RVD) is a powder coated 16 ga steel voltage barrier for CL Series Relay Panels (RP). RVD may be field installed between adjacent Lighting Tough Relays (LTR) creating separate wiring compartments for 120 VAC, 277 VAC, or emergency circuits.



Ordering



Part Number	Description
CLRVD	CL Series Relay Voltage Divider